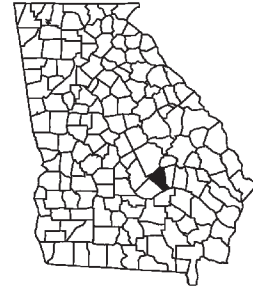


GENERAL HIGHWAY MAP
WHEELER COUNTY
GEORGIA

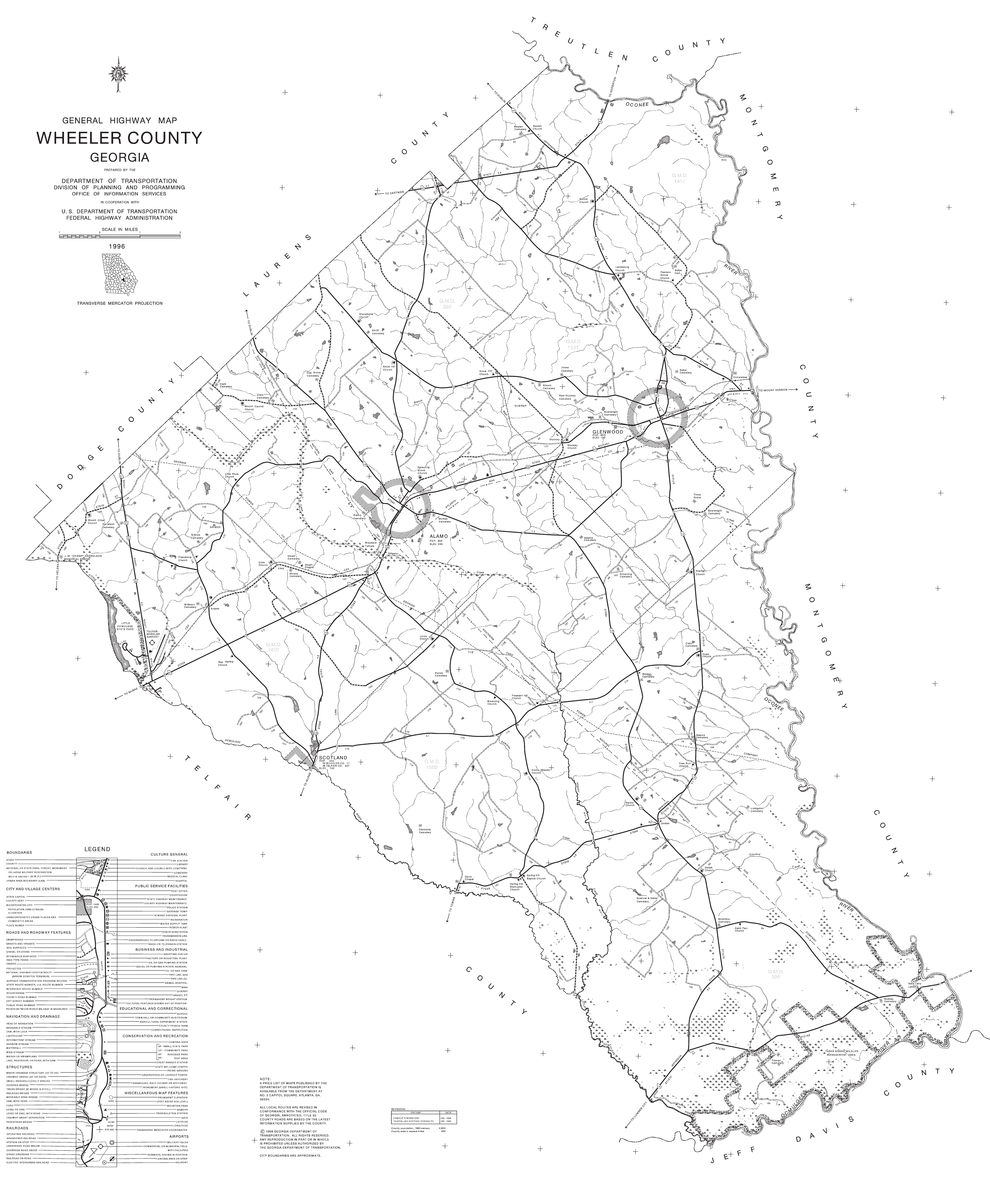
PREPARED BY THE
DEPARTMENT OF TRANSPORTATION
DIVISION OF PLANNING AND PROGRAMMING
OFFICE OF INFORMATION SERVICES
IN COOPERATION WITH
U. S. DEPARTMENT OF TRANSPORTATION
FEDERAL HIGHWAY ADMINISTRATION

SCALE IN MILES

1996



TRANSVERSE MERCATOR PROJECTION



LEGEND

- BOUNDARIES**
 - STATE
 - COUNTY
 - MUNICIPAL
- CITY AND VILLAGE CENTERS**
 - CITY
 - VILLAGE
 - UNINCORPORATED PLACE
- ROADS AND ROADWAY FEATURES**
 - UNIMPROVED
 - GRAVEL
 - BITUMINOUS SURFACES
 - GRAVEL ON BITUM
 - DIRT
 - GRAVEL ON PAVEMENT
 - GRAVEL ON SAND
 - GRAVEL ON GRAVEL
 - GRAVEL ON GRAVEL
 - GRAVEL ON GRAVEL
 - GRAVEL ON GRAVEL
- NAVIGATION AND DRAINAGE**
 - HEAD OF NAVIGATION
 - NAVIGABLE STREAM
 - INTERMITTENT STREAM
 - WATERFALL
 - WATERFALL
 - WATERFALL
 - WATERFALL
 - WATERFALL
 - WATERFALL
 - WATERFALL
 - WATERFALL
 - WATERFALL
- STRUCTURES**
 - INDUSTRIAL STRUCTURE
 - HIGHWAY BRIDGE
 - RAILROAD BRIDGE
 - RAILROAD BRIDGE
 - RAILROAD BRIDGE
 - RAILROAD BRIDGE
 - RAILROAD BRIDGE
 - RAILROAD BRIDGE
 - RAILROAD BRIDGE
- CONSERVATION AND RECREATION**
 - CAMPING AREA
 - STATE PARK
 - STATE PARK
 - STATE PARK
 - STATE PARK
 - STATE PARK
 - STATE PARK
 - STATE PARK
 - STATE PARK
- MISCELLANEOUS MAP FEATURES**
 - RAILROAD
 - RAILROAD
 - RAILROAD
 - RAILROAD
 - RAILROAD
 - RAILROAD
 - RAILROAD
 - RAILROAD
- CULTURE GENERAL**
 - CHURCH
 - CHURCH
 - CHURCH
 - CHURCH
 - CHURCH
 - CHURCH
 - CHURCH
 - CHURCH
- PUBLIC SERVICE FACILITIES**
 - COURTHOUSE
 - COURTHOUSE
 - COURTHOUSE
 - COURTHOUSE
 - COURTHOUSE
 - COURTHOUSE
 - COURTHOUSE
 - COURTHOUSE
- BUSINESS AND INDUSTRIAL**
 - FACTORY
 - FACTORY
 - FACTORY
 - FACTORY
 - FACTORY
 - FACTORY
 - FACTORY
 - FACTORY
- EDUCATIONAL AND CORRECTIONAL**
 - SCHOOL
 - SCHOOL
 - SCHOOL
 - SCHOOL
 - SCHOOL
 - SCHOOL
 - SCHOOL
 - SCHOOL

NOTE:
A PRICE LIST OF MAPS PUBLISHED BY THE
DEPARTMENT OF TRANSPORTATION IS
AVAILABLE FROM THE DEPARTMENT AT
NO. 2, CAPITOL SQUARE, ATLANTA, GA.
30334.

ALL LOCAL ROUTES ARE REVISED IN
CONFORMANCE WITH THE OFFICIAL CODE
OF GEORGIA, ANNOTATED, TITLE 32.
COUNTY ROADS ARE BASED ON THE LATEST
INFORMATION SUPPLIED BY THE COUNTY.

© 1996 GEORGIA DEPARTMENT OF
TRANSPORTATION. ALL RIGHTS RESERVED.
ANY REPRODUCTION IN PART OR IN WHOLE
IS PROHIBITED UNLESS AUTHORIZED BY
THE GEORGIA DEPARTMENT OF TRANSPORTATION.

CITY BOUNDARIES ARE APPROXIMATE.

REVISIONS	DATE	BY
COMPLETE INVENTORY	JUL 1988	
REVISIONS	NOV 1988	
DATE	NOV 1988	
DATE	NOV 1988	
DATE	NOV 1988	
DATE	NOV 1988	
DATE	NOV 1988	
DATE	NOV 1988	